

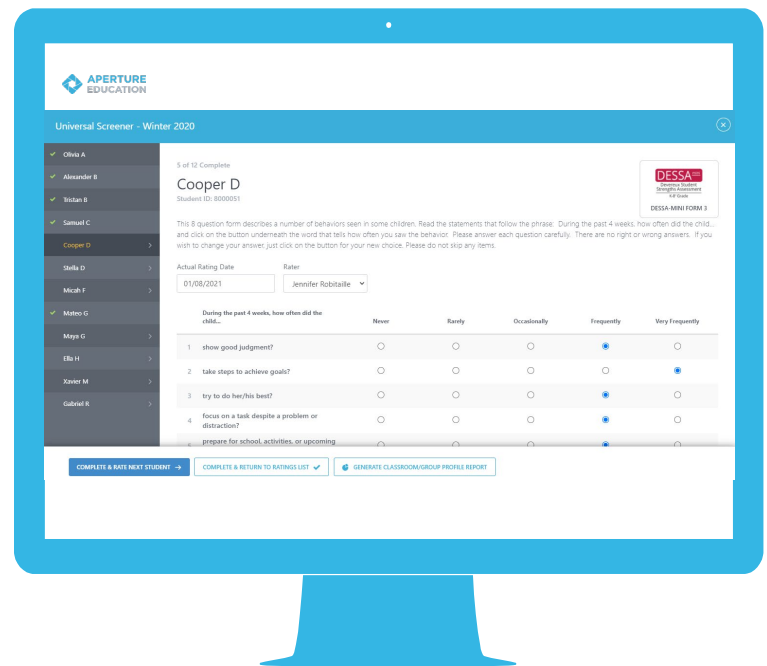
# About the DESSA

## When we start with strengths, we end up stronger

The DESSA supports student social and emotional learning (SEL) by providing administrators, educators, staff, parents, and students with accurate and actionable data about students' social-emotional strengths and growth opportunities.

The CASEL-aligned DESSA suite is well-suited to inform and support the social-emotional growth of students by helping educators and administrators:

- Identify students' social-emotional strengths and growth opportunities
- Guide intervention activities at the individual student, small group, classroom, school, or district level
- Monitor students' progress in building social-emotional skills throughout the school year
- Evaluate the impact of social and emotional learning interventions
- Support continuous quality improvement (CQI) efforts to promote optimal SEL outcomes in districts, schools, and out-of-school-time programs



## The DESSA suite of SEL assessments

- DESSA-mini (one-minute screener for K-8)
- DESSA (K-8)
- DESSA K-5 *Second Step* Edition
- DESSA- High School Edition (9-12 teacher rating)
- DESSA- High School Edition Student Self-Report (9-12)



## The DESSA-mini

The only social and emotional screener to meet the universal criteria set forth by the World Health Organization

- 8 questions
- 1 minute to complete
- 4 forms for screening and progress monitoring

## The DESSA-Second Step Edition

An assessment specifically designed to align with *Second Step* curriculum

- 36 questions



## The DESSA-High School Edition Student Self-Report (9-12)

Give students real-time results and immediate strategies to drive change, all in under 10 minutes.

- 55 questions
- Normed on a nationally representative sample

## The DESSA (K-8)

Established in over a decade of science and peer-reviewed literature

- 72 questions
- Nationally standardized on a representative sample of 2,494 children grades K-8

## The DESSA-High School Edition (9-12)

A teacher-rating tool to help high school staff and students dig deeper into student strengths and growth opportunities

- 43 questions
- Normed on a nationally representative sample

*See our DESSA manual for more in-depth information about the DESSA suite of SEL assessment*



# We set the standard for research-based assessment

## Respected

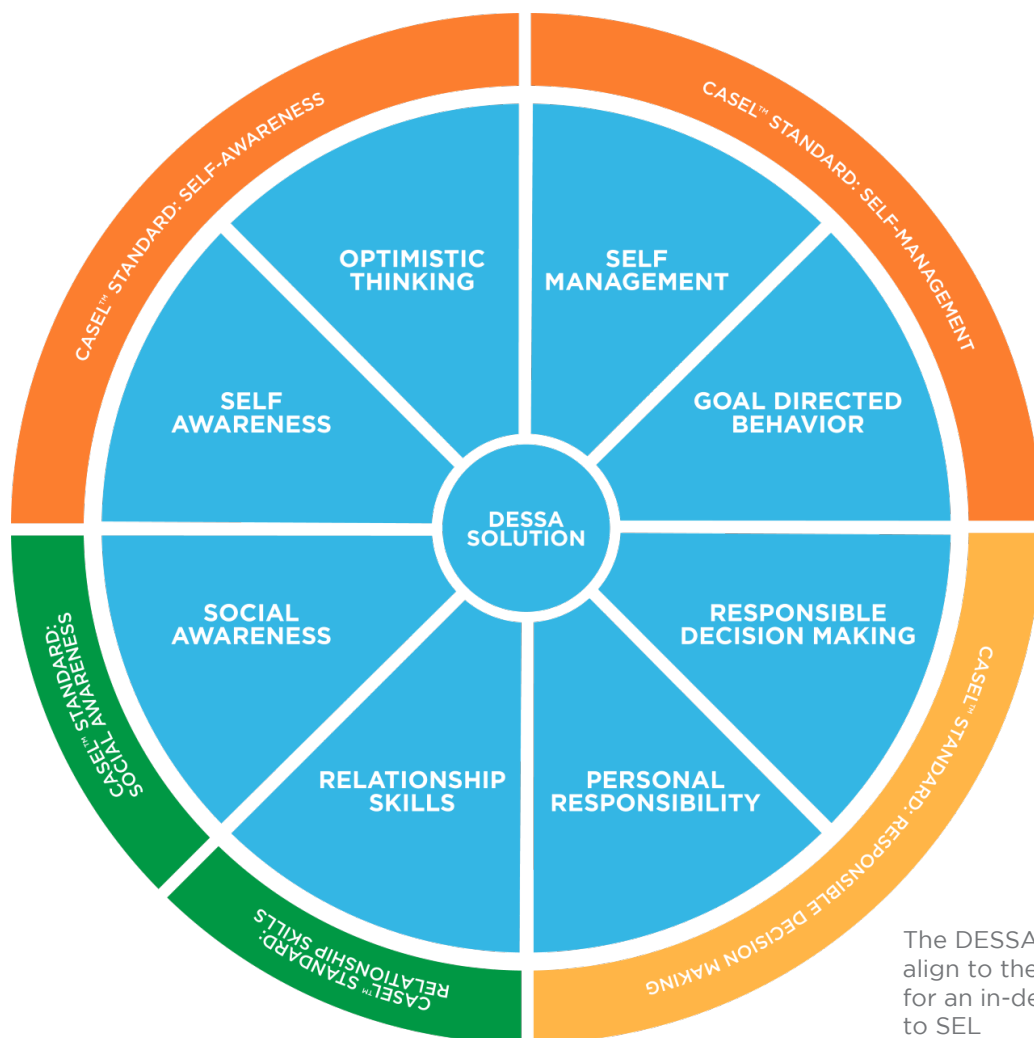
- Trusted by Johns Hopkins University, American Institutes for Research (AIR), the Rand Corporation, City Year, and the Y of the USA for use in major studies
- Rooted in Resilience and SEL theories
- Designed on the same proven models as RTI & MTSS

## Validated

- 130 peer-reviewed studies
- Nationally normed
- All measures meet or exceed psychometric standards
- Only screener to meet universal criteria set forth by the World Health Organization

## Practical

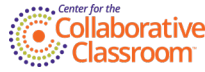
- DESSA-mini is the quickest strengths-based universal screener (60 seconds per student)
- DESSA-mini predicts social emotional competence with 95% accuracy



The DESSA 8 strength areas align to the 5 CASEL standards for an in-depth approach to SEL



## Our Partners



***"Given its level of comprehensiveness and focus on child strengths, and its fit with other criteria listed here, the DESSA provides useful information for intervention planning and can also be applied to create classroom profiles that can be used for subsequent prevention strategies."***

Durlak, J. A., Domitrovich, C. E., Weissberg, R. P., Gullotta, T. P. (2015). Handbook of Social and Emotional Learning Research and Practice. New York: Guilford Press.



***"Another advantage the DESSA has... is that it is shorter and simpler because the same form can be used with both parents and teachers. This also enables parent and teacher ratings to be directly compared on the same set of behaviors."***

Denham, S. A., Ji, P. & Hamre, B. (2010). Compendium of preschool through elementary social-emotional learning and associated assessment measures. Chicago, IL: Collaborative for Academic, Social, and Emotional Learning.

To learn more, contact [sales@apertureed.com](mailto:sales@apertureed.com)